

ABOUT INLAND IMAGING

At Inland Imaging, our specialty trained radiologists, nurses, and technologists make sure that you get detailed answers quickly and accurately. Because when it comes to your health, better answers can lead to better outcomes.

SCHEDULING: (509) 455.4455

BREAST BIOPSY LOCATIONS

Inland Imaging Sacred Heart Doctors Building

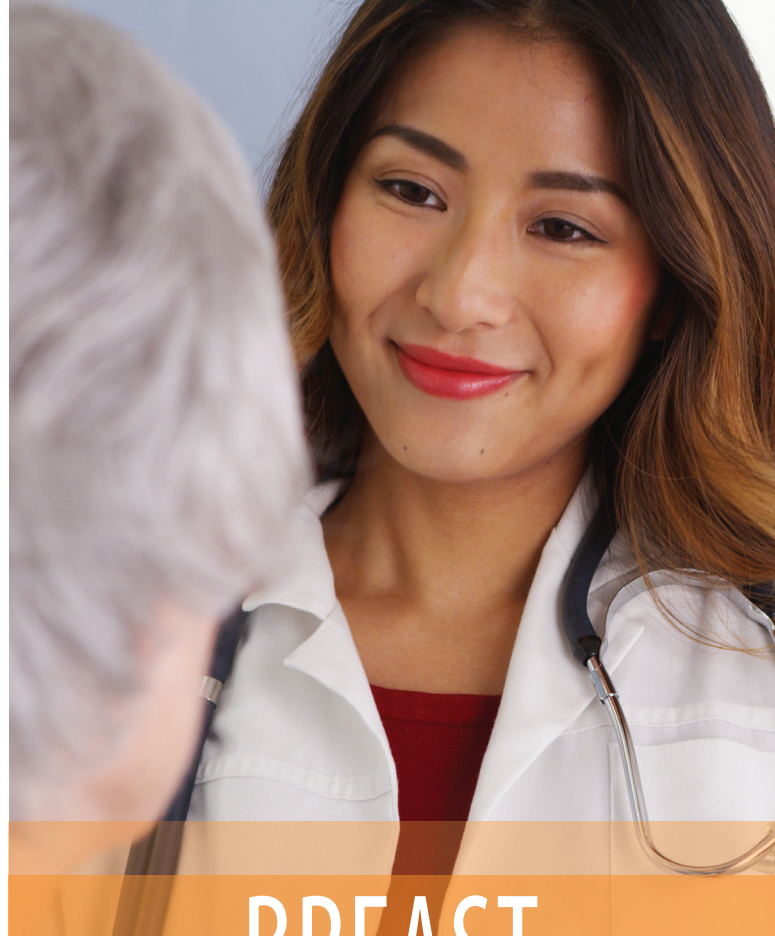
105 West 8th Avenue, Suite 100C
Spokane, WA 99202

Inland Imaging Holy Family Center

Holy Family Hospital
5715 North Lidgerwood
Spokane, WA 99208

Inland Imaging Providence Medical Park

16528 East Desmet Court, Suite A1300
Spokane Valley, WA 99216



BREAST BIOPSY

What to Expect




Inland Imaging[®]

Answers you can trust and care you can count on.

Revised 3.2022


Inland Imaging[®]

Answers you can trust and care you can count on.

WHAT IS A BREAST BIOPSY?

If a mammogram or other imaging study shows a change in your breast, a breast biopsy may be recommended. A breast biopsy is a medical procedure that removes a small sample of tissue so that it may be examined by a Pathologist.

At Inland Imaging, we use special equipment to perform your breast biopsy. The type of biopsy you have is decided by one of our specialized breast radiologists after reviewing your images. Our current image guided procedures include tomosynthesis or stereotactic guided biopsy (mammography), ultrasound guided biopsy or MRI guided biopsy. Each of our radiologist has extensive experience in all breast procedures.

All of our procedures are performed on an out-patient basis without general anesthesia. A breast biopsy will not require an overnight stay. These image-guided biopsies are safe and accurate procedures resulting in little discomfort and scarring.

How Do I Prepare?

One of our staff will call you prior to your exam to obtain your medical history and to answer any questions you may have. We encourage you to ask questions.

On the day of the procedure:

- Please limit your eating. Do not eat four hours before your MRI biopsy. You may eat a light meal before all other types of biopsies, (Stereotactic or Ultrasound). Remember to take your medication unless otherwise instructed by our staff.
- Wear a front-opening shirt and a sports (jogging) bra. If you do not have a sports bra, please wear a supportive bra without under wire.
- Please do not wear deodorant, lotions, or powders under your arms or around your breast.



- Check in at the reception desk at least 30 minutes before your appointment.
- The biopsy will take one to two hours. You may resume light activity 30 minutes after your biopsy. Please do not lift or push more than 10 pounds for 24 hours. You may start normal activity in 48 hours.
- You may shower, but please do not bathe or swim for five days.

After your biopsy is performed, a small marker is placed in your breast to identify the area where tissue was removed. The technologists that assist your radiologist will provide you with instructions on caring for your biopsy site after your procedure.

When Can I Get Results?

The radiologist will review your pathology results and make recommendations based on those results. Your health care provider will then notify you of your results. Please call them if you have not received your results in seven business days. It is important that you follow up with your health care provider.

ABOUT US

As a Breast Center of Excellence, Inland Imaging uses dedicated state of the art equipment including 3D (Tomosynthesis) technology. The radiologists who read and perform your exams are board certified and are experienced and knowledgeable in their field. All of Inland Imaging technologists who perform your exams exceed the recommended education and accreditation with the American College of Radiology.