

ABOUT INLAND IMAGING

At Inland Imaging, our specialty trained radiologists, nurses, and technologists make sure that you get detailed answers quickly and accurately. Because when it comes to your health, better answers can lead to better outcomes.

SCHEDULING: (509) 455.4455

BREAST IMAGING CENTER LOCATIONS

For a list of our breast imaging center locations, please refer to: www.inlandimaging.com/locations. To find out more, talk with your doctor or call Inland Imaging at 509.363.7799.



ABBREVIATED BREAST MRI

A Highly Sensitive Screening Tool
for Patients with Dense Breast Tissue



Inland Imaging[®]

Answers you can trust and care you can count on.

Inland Imaging[®]

Answers you can trust and care you can count on.

WHAT IS AN ABBREVIATED BREAST MRI (AB-MRI)?

Abbreviated Breast MRI, also sometimes called FAST breast MRI, is a shortened version of a breast MRI to evaluate for cancers that may be missed on mammography. It is faster and more affordable than a full breast MRI exam. It is a supplement to annual screening mammography and not a replacement for mammography. AB-MRI has been shown to detect up to 16 more breast cancers per 1000 women when used as a supplement to annual screening mammography.

Is AB-MRI Right for me?

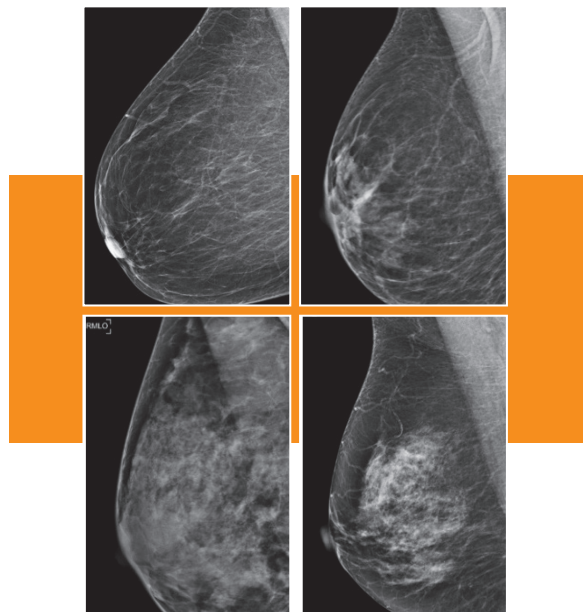
AB-MRI is intended for women with an average lifetime risk of breast cancer. It may be of particular benefit in women with dense breasts.

What is Breast Density?

Breast density is a description of breast composition on a mammogram. Dense breasts have more fibrous and glandular tissue. Dense breasts are normal but can make it more difficult to detect breast cancer with mammography. In Washington state, women receive a letter with their mammogram results informing them of their breast density.

What Else Should I Know Before Getting an AB-MRI

- AB-MRI is not covered by insurance.
- AB-MRI is not for women with a high life time risk of breast cancer, women with a strong family history of breast cancer or a known genetic predisposition to breast cancer. In these women, an annual full breast MRI is typically covered by insurance.



Clockwise from top left: Four categories of breast density; almost entirely fatty, scattered areas of fibroglandular density, heterogeneously dense, and extremely dense. Images courtesy of the American College of Radiology (ACR).

- AB-MRI is also not appropriate for women with recently diagnosed breast cancer.
- AB-MRI requires administration of contrast (gadolinium) through an IV.
- AB-MRI does not use radiation.
- AB-MRI is used in combination with mammography and we require a normal mammogram within 11 months of scheduling an AB-MRI.

How do I get an AB-MRI?

A referral from your primary care provider or breast specialist is required to schedule an appointment. Talk to your provider about whether AB-MRI is an appropriate screening tool for you.

**Source: Journal of Breast Imaging, 2020, 603-608; doi:10.1093/jbi/wbaa060; Clinical Practice Article*