

## About Inland Imaging

*Utilizing state-of-the-art technology and specialized clinical expertise, Inland Imaging provides critical medical imaging information used by physicians and their patients throughout the Northwest.*

*Choosing to have your exam done at Inland Imaging gives you access to our team of compassionate physicians and staff, where your unique needs and concerns are at the center of our care. We value the trust that you have placed in us and are pleased to answer any questions you may have at any time.*

## Scheduling

509.455.4455

## Locations

### **Inland Imaging at Sacred Heart Doctors Building**

105 West 8th Avenue, Suite 100C & 125C  
Spokane, WA 99202

### **Inland Imaging at Holy Family**

5715 North Lidgerwood  
Spokane, WA 99207

### **Inland Imaging South Center**

525 South Cowley  
Spokane, WA 99202

### **Inland Imaging Valley Center**

12420 East Mission  
Spokane, WA 99216

### **Inland Imaging Deer Park**

702 South Park Avenue, Suite B  
Deer Park, WA 99006



# BREAST IMAGING

*Digital Mammography,  
Breast Ultrasound, Biopsies,  
MRI & PET/CT*

  
**Inland Imaging**®  
Trusted Medical Imaging

# BREAST IMAGING

## AN OVERVIEW OF WOMEN'S IMAGING

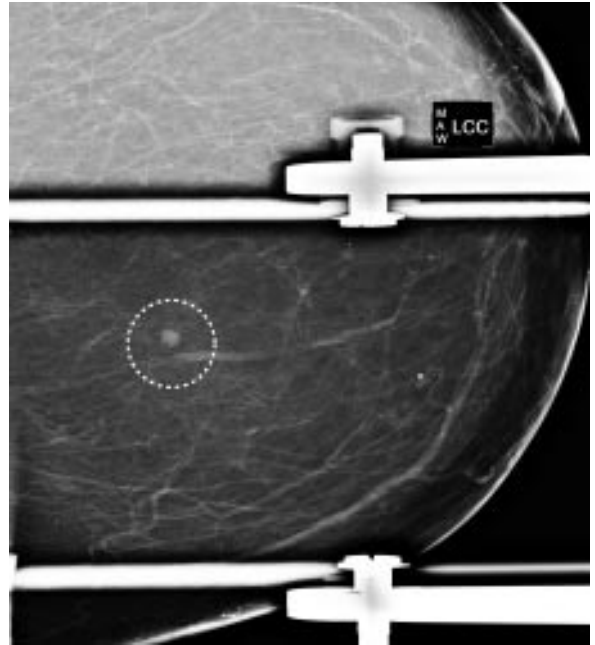
Breast cancer is the second leading cause of cancer death in women today. It is estimated that one in seven women in the U.S. will develop breast cancer in her lifetime. Yet research shows the 5-year relative survival rate for those who detect their breast cancer early is 82 percent.

Breast imaging at Inland Imaging, provides you and your physician with all the technology and expertise available to gain important information about your breast health. The breast imaging procedures explained in this brochure include screening and diagnostic mammography, breast ultrasound, breast biopsies, breast MRI, and PET/CT. Mammography services at Inland Imaging are accredited by the American College of Radiology (ACR) and certified by the Food and Drug Administration (FDA). Inland Imaging's radiologists who read breast imaging studies are board-certified physicians who specialize in diagnostic breast imaging. Our mammography technologists are dedicated mammography professionals who perform over 40,000 exams annually.

## Screening Mammography with CAD

Mammography can be divided into two categories: screening and diagnostic. Your screening mammogram at Inland Imaging is performed in private by a qualified female technologist. The results of your examination are interpreted by a radiologist. The American Cancer Society (ACS) recommends a yearly screening mammogram for all women age 40 years and older.

Computer aided detection (CAD) technology reviews a patient's film and evaluates it after the radiologist has made an initial interpretation. Studies show that CAD analysis improves the detection of early cancer by as much as eight to ten percent. If the software detects any abnormalities on the mammogram film, it marks them.



*A digital image of the breast is sent to a computer workstation, which provides the radiologist with an ideal view and the ability to adjust the image in multiple ways, something not possible with a film image (top section of photo.)*

The radiologist then reviews the marked areas to determine if the areas are suspicious and require further evaluation.

## Diagnostic Mammography

A diagnostic mammogram is a problem-solving mammogram which may involve additional views of the breast. This exam is performed by a technologist who consults directly with a radiologist to determine the best views needed to aid in the breast evaluation. This work up will determine if further imaging is needed, such as a breast ultrasound.

# BREAST IMAGING

## Digital Mammography

Both types of mammograms will be performed with digital technology, the latest innovation in breast imaging. This technology differs from conventional mammography. While both use radiation, the digital image is sent to a computer workstation, instead of film. The workstation provides the radiologist with an ideal view and the ability to adjust the image in multiple ways, something not possible with film.

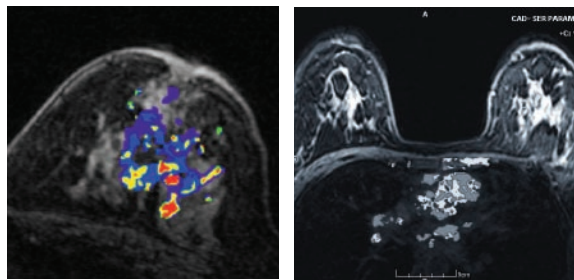
Digital technology, like conventional mammography, requires compression of the breast during the exposure. Compression is a very important component in mammography. Breast anatomy is, by design, mound shaped. Compressing the breast mound into a uniform thickness not only produces a clearer image, compression also lowers the radiation dose during the exam. If you have questions or concerns about compression, talk with your technologist.

## Breast Ultrasound

Breast ultrasound is a noninvasive exam that uses sonar technology to determine if a suspicious area is a fluid filled cyst or a solid mass that may require further testing, such as a biopsy.

## Breast Biopsies

A breast biopsy is a tissue sampling technique used to confirm or rule out the presence of breast cancer. Breast biopsies can be surgical or non-surgical; Inland Imaging specializes in non-surgical breast biopsies. Utilizing these methods benefits patients by decreasing recovery time and reducing scarring compared with surgical excisional biopsy. Inland Imaging utilizes two primary non-surgical methods to obtain samples: ultrasound-guided core-needle



*Breast MRI is an excellent problem solving technology.*

breast biopsy and stereotactic breast biopsy.

*Ultrasound-guided core-needle biopsy* is commonly used to evaluate suspicious masses within the breast, whether or not they can be felt during a clinical examination. An ultrasound probe is placed over the site and a radiologist guides a biopsy needle directly into the mass. Local anesthesia is used during this procedure as well as during stereotactic breast biopsy.

*Stereotactic biopsy* uses a dedicated biopsy table combined with digital mammography to determine the exact biopsy location. Tissue samples are then extracted using a vacuum assisted biopsy instrument called the Mammotome™. Patients have minimal discomfort during and after the procedure and can usually resume normal activity the following day.

## Breast MRI

Breast magnetic resonance imaging (MRI) is an excellent problem solving technology. It is often used to investigate breast concerns first detected with mammography, physical exam, or other imaging exams. Breast MRI has been approved by the FDA since 1991 for use as a supplement to mammography to help diagnose breast cancer. Unlike

mammography, which uses low dose x-rays to image the breast, MRI uses powerful magnetic fields and radio waves to create images of the breast.

Based on new guidelines from the American Cancer Society, it is now suggested that women with a “high risk” of developing breast cancer pair their mammograms with a Breast MRI scan. These tests together provide a greater opportunity for doctors to determine early signs of cancer. Catching these warning signs early can open the way for more accurate and less invasive treatment options, increasing the chance of patient survival.

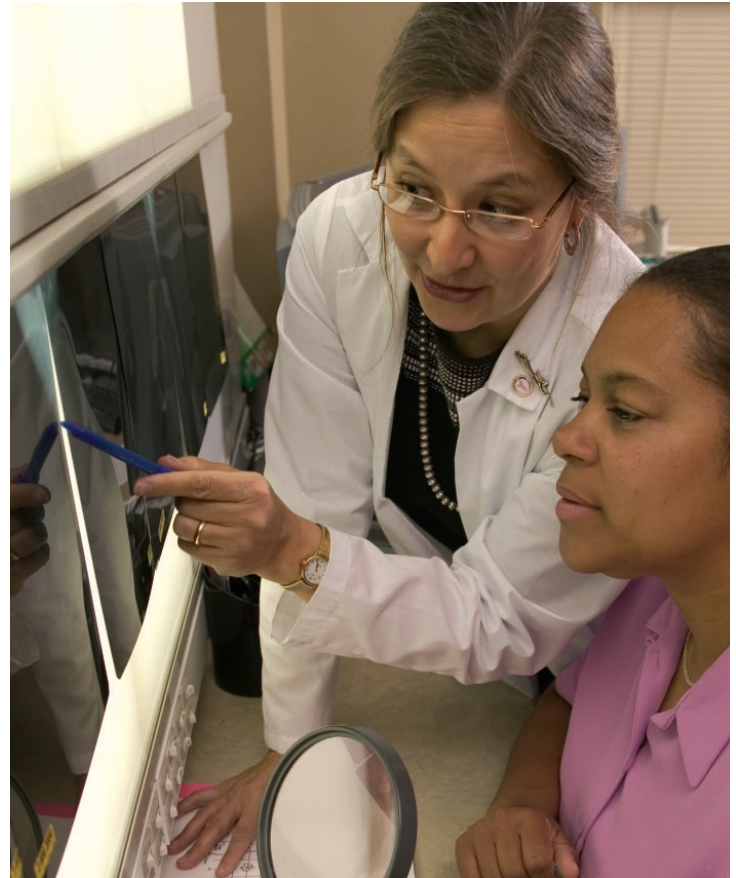
Screening MRI is now recommended for women with a 20-25% or greater lifetime risk of breast cancer. This includes women with a strong family history of breast or ovarian cancer as well as women who were treated for Hodgkin’s disease. However, there is still unresolved evidence that would suggest MRI screening for women with dense breasts, a history of LCIS (lobular carcinoma in situ), or personal history of breast cancer.

Patients undergoing a breast MRI exam lie face down on the MRI table which is specially configured so that the breasts are positioned to hang freely through two openings called breast coils. After images have been acquired and assessed with CAD, a radiologist reads and interprets the images.

Biopsies may also be performed using breast MRI. MRI-guided breast biopsy is a fast, safe and easy way to find and biopsy breast abnormalities without any unnecessary surgery.

## PET/CT

Positron emission tomography (PET), combined with computed tomography (CT), is a nuclear medicine imaging technique that uses very short-lived radioactive compounds that localize in cancer cells. Typically a patient will undergo other imaging exams first before receiv-



ing a PET/CT scan. In relation to breast cancer, PET/CT is used solely in the initial staging or re-staging of cancer, and in evaluating its response to treatment.

## Ask Your Doctor

Inland Imaging is continuously investing in the latest breast imaging technology to provide patients with access to the highest quality services. Several breast imaging modalities have been discussed in this brochure. We encourage you to talk to your doctor about which modality may be best for you.

  
**Inland Imaging**<sup>®</sup>  
[www.inlandimaging.com](http://www.inlandimaging.com)